



MACS

AL MUTHATHAWERAH

A/C SYSTEMS ACCESSORIES IND. CENTER LLC.



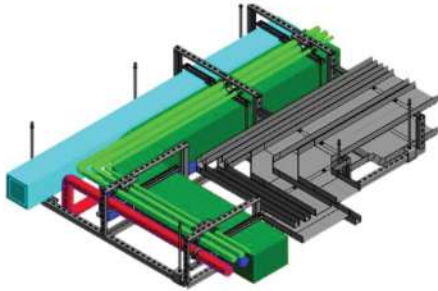
info@menascomisr.com

Tel : +2012 70 02 02 72

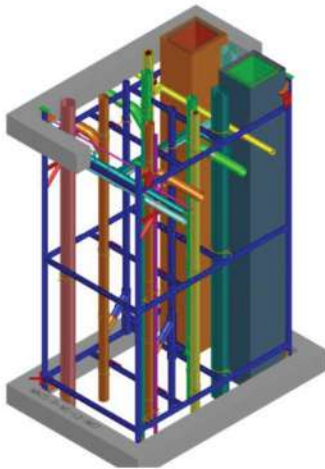
www.menascomisr.com

Our off-site distribution racks are designed using state of the art 3D BIM technology to configure ceiling spaces and utility risers into off-site assemblies. Our skid-mounting equipment assemblies allow for off-site fabrication of compact and sometimes congested mechanical and electrical equipment rooms. These skids are typically mounted complete with inertia bases, controls and devices.

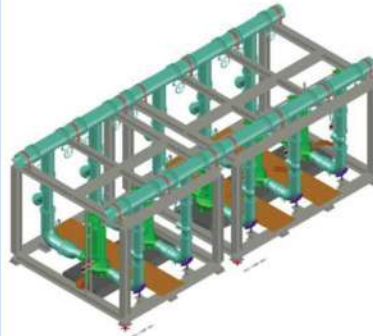
Horizontal Module



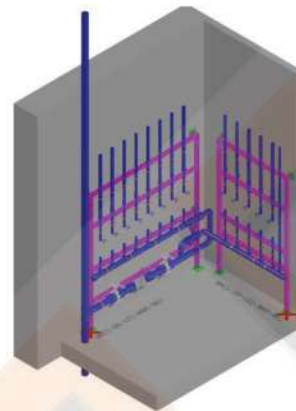
Vertical Module



Equipment Module



Water Meter Module



CONSISTENT QUALITY

All modules are fabricated in the same way, when the reference module quality is signed off that is then the minimum standard to be supplied.



PROJECT SPECIFIC DESIGN

The Module is designed and built by an experienced team, specialized in off-site construction technology.



NO STORAGE RESTRICTION

No storage space for toilet material at the site, since the module is delivered finished.



FULLY TESTED

Pods are delivered fully tested and our team will be on site when water and power is connected to the building to do the final commissioning.



LESS SNAGGING

Considerably less requirement for snagging later on in the often-hectic stage of the project.



PLANNING & TIME SAVING

Using modules can easily reduce the overall build program of the project.





LESS CRANE TIME

One lift with the crane and all materials and the delivery is completed, no need for pallets for each item to be sent to each floor then each room.



ONE POINT OF CONTACT

No inter-trade or company arguments because we are from the same company and it all coordinated, and therefore no delays.



FIXED PRICE

A fixed price is agreed on the specification so there will be no surprises, as long as the order is received, drawings and specification are signed off in time to order and get the materials delivered, responsibility for on time delivery is on the pod supplier.



LESS WORKERS & SUPERVISION ON SITE.

The project manager can deal with only one contractor instead of a minimum of 10 suppliers and subcontractors.



EASY MAINTENANCE

Module installed back to back and location of all the services in the corridors / riser shaft gives easy access for maintenance.

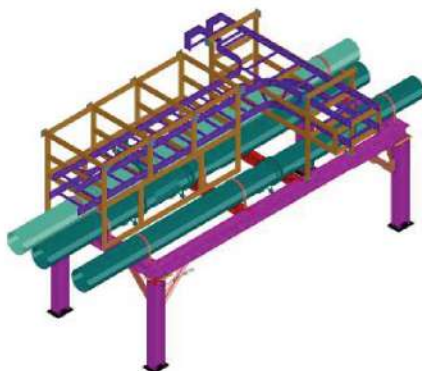


FAST INSTALLATION

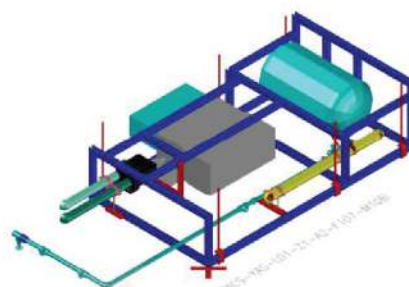
The speed of installation on site, 50-30 module can be positioned a day if the site is ready and pods can also be installed throughout the night.

Since 2018, we have led the industry in developing ways to optimize onsite productivity through off-site design, construction and fabrication technologies and processes. Off-site construction simply means fabricating Mechanical Electrical Plumbing (MEP) system components & Modules in our workshop and delivering them to the job site for safe, efficient, high quality and accurate assembly.

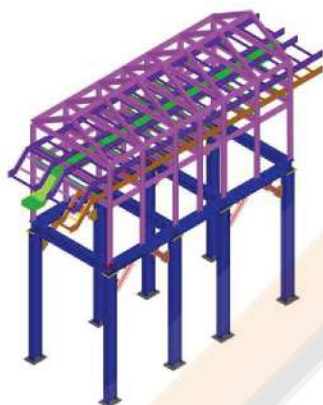
Pipe Rack Module



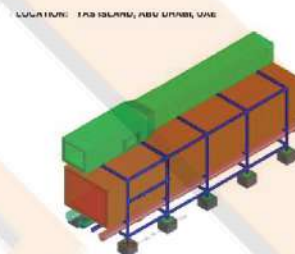
Bathroom Module



Electrical Rack Module



Duct or Pipe Module





GI Coil, MS Coil, Aluminum Sheet & SS Sheet



Galvanized steel



Mild Steel



Stainless Steel



Rectangular VCD



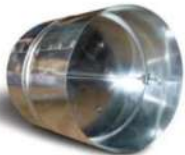
Round VCD



Galvanized, mild Steel, Stainless Steel Round Duct



Rectangular NRD



Round NRD



Curtain Fire Damper



Motorized VCD



Hinged & Double Cam



Access Doors



Plain Aluminum Cladding



Stucco Aluminum Cladding



Slip-on Flange, Corner, Cleats & Clamps

Fire Rated Duct



Fire rated Duct as per BS476 part 20:1987 & part 24:1987. For Rectangular and circular fire-resistant ventilation and smoke extraction ducts Type A (Fire outside duct) and Type B (Fire inside duct). with horizontal and vertical installation, made of Stainless Steel, Mild Steel, or galvanized Steel.

Dubai Civil Defense Approved.
Abu Dhabi Civil Defense Approved.
Sharjah Civil Defense Approved

PROJECTS



NASHAMA TOWN SQUARE



7 PEARLS



MIDTOWN DANIA



MIDTOWN AFNAN



BANYAN TREE RESIDENCES



CREEKSIDE 18



BLOOM TOWERS



BLOOM HEIGHTS



ACT 1 & ACT 2 BY EMAAR



**EXPO 2020
C38 ICONIC WATER FEATURE**



EXPO MEDIA ZONE HUB



THE LAWNZ



BURJ ROYAL



TRADERS MARKET



STAFF ACCOMMODATION ZONE RA



ABRAHAMIC FAMILY HOUSE



AVANI HOTEL SUITES



FALCON DATA CENTRE



AHU 6 DATA CENTER



IRIS DATA CENTRE KIZAD



info@menascomisr.com

Tel : +2012 70 02 02 72

www.menascomisr.com

Head Office : 78 Al Moltaka Al Arabi Street, El Nozha, Cairo, Egypt